



Updates on pre2021 CER Supply *- addition aspects -*

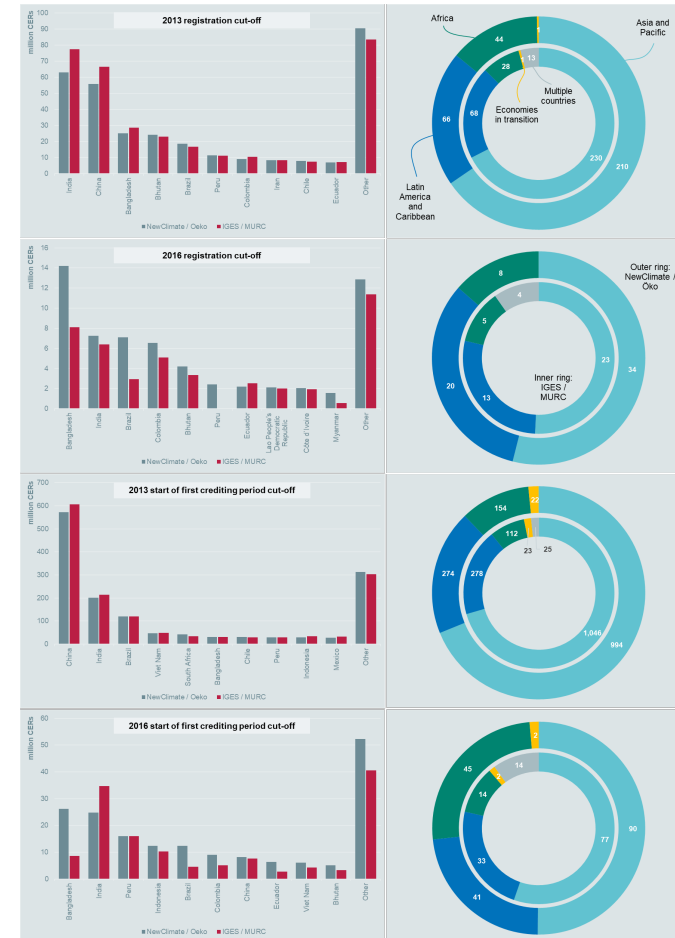
Thomas Forth

Federal Ministry for the Environment, Nature Conservation
and Nuclear Safety
Germany, Berlin



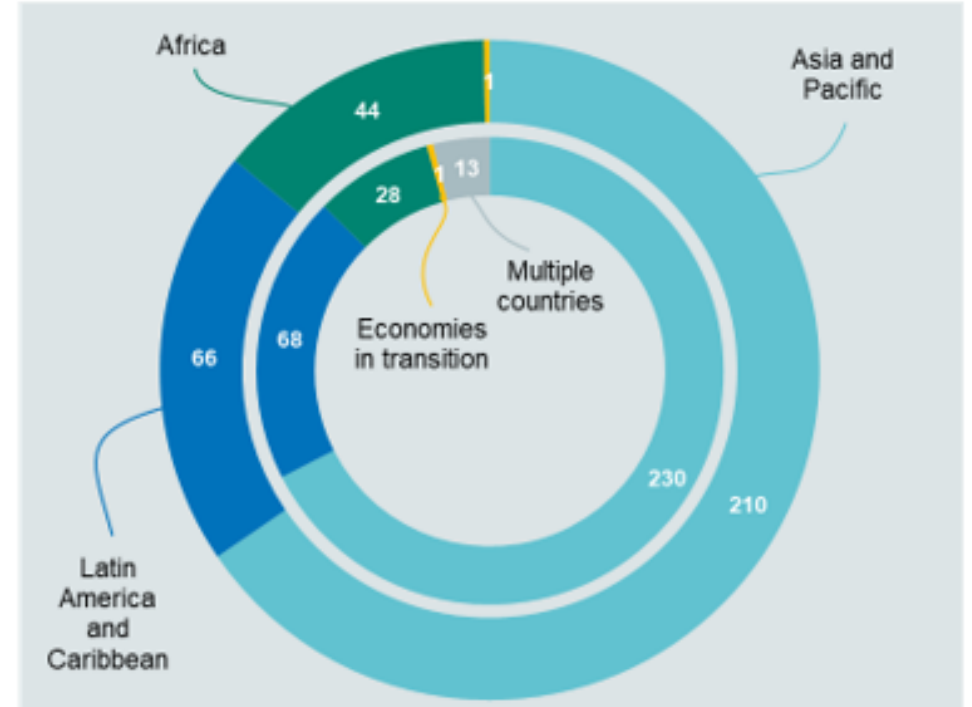
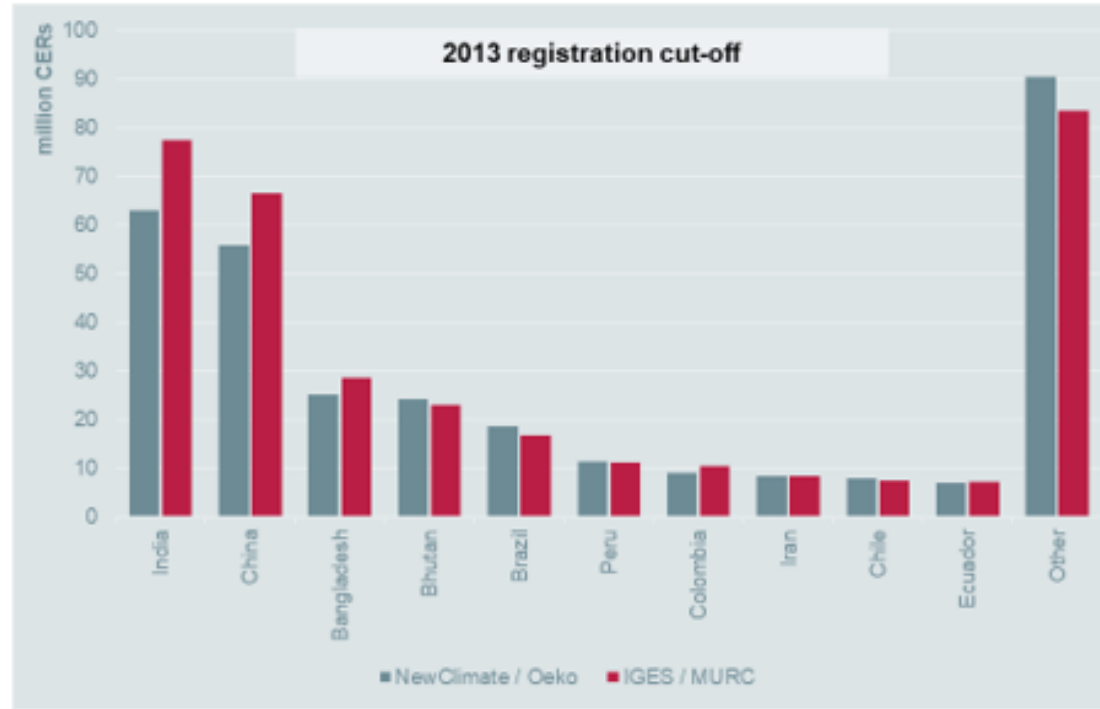
Regional and Host country data

- Cumulative CER supply potential for selected restrictions allocated to host countries regions
- 10 top ranking host countries
- Category “others” is relevant



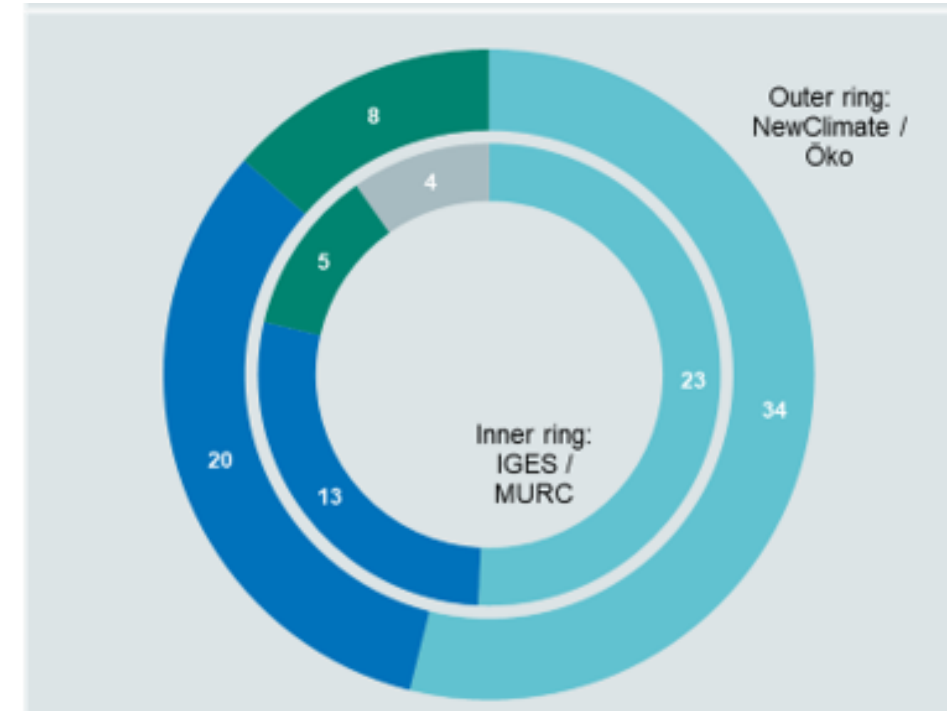
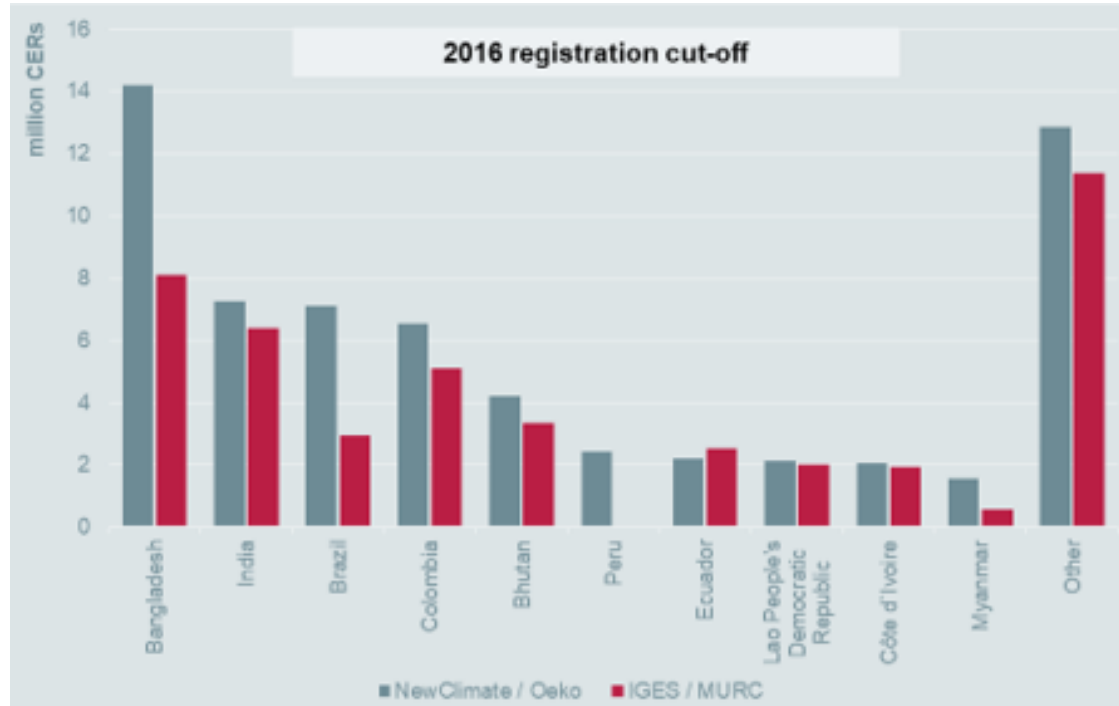


Cut-off 2013 registration



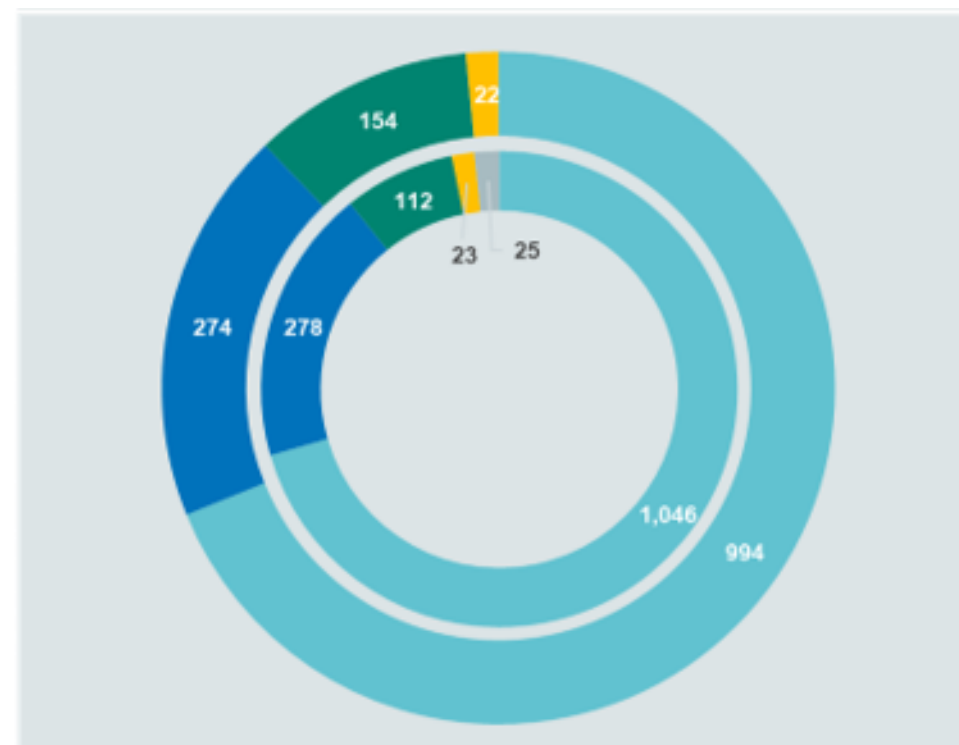
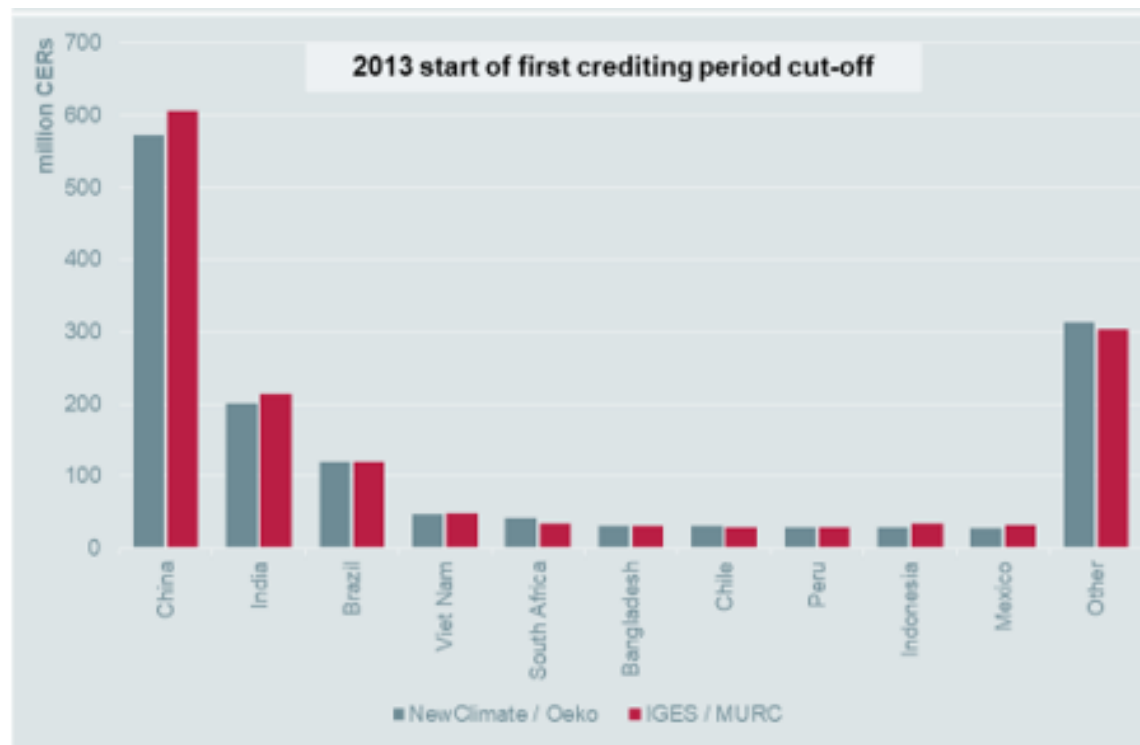


Cut-off 2016 registration



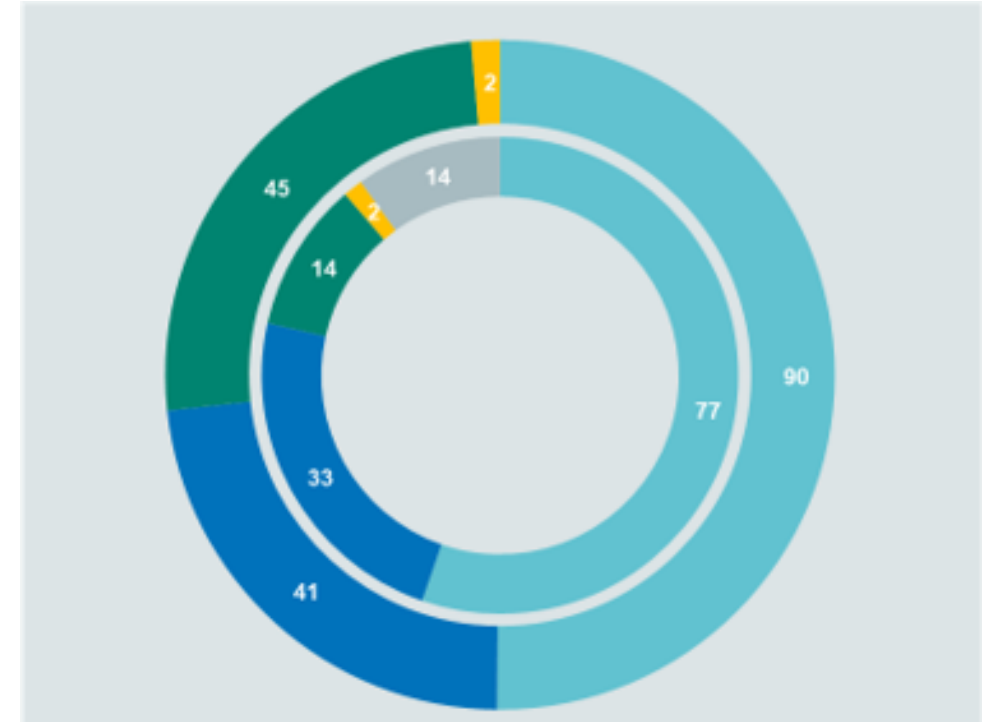
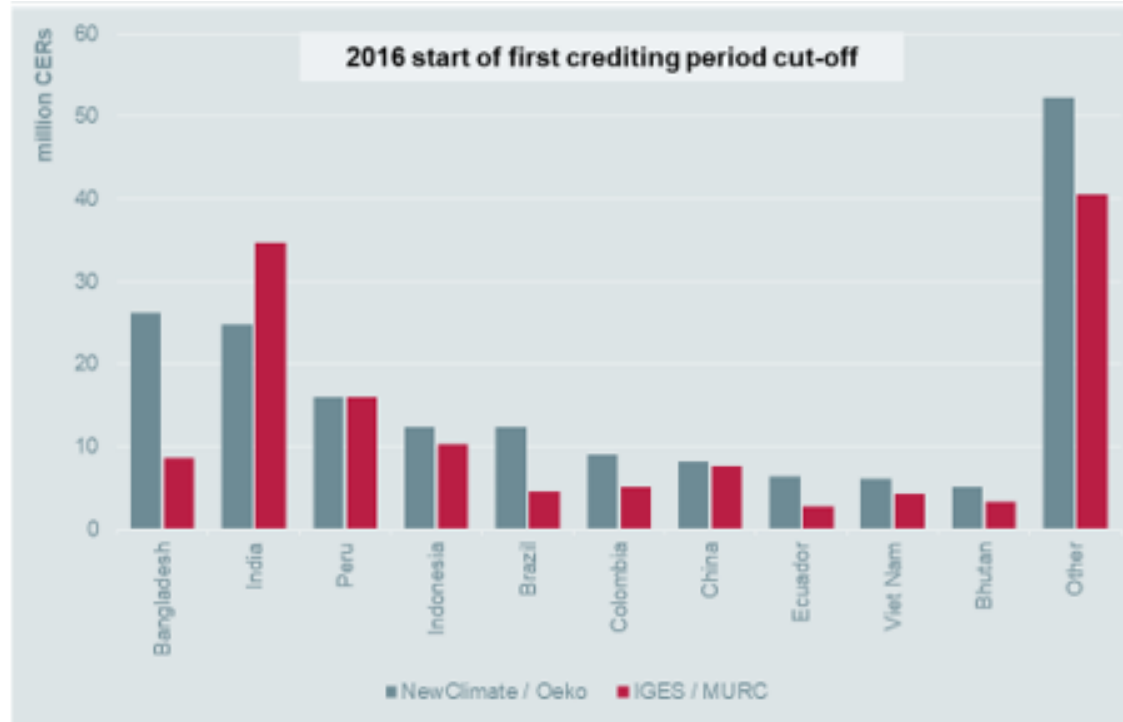


Cut-off 2013 start of first crediting period





Cut-off 2016 start of first crediting period





Further steps

Research

- Data update in 2021
- Host country – specific analysis
- Continued post2020 options vs. CP2 inherent activity closing
- Market tradeability (relevant parameters to select)

Negotiations

- Excluding uses weakening NDCs
- (INDCs / Updated NDCs)
- Uses other than NDCs
- CP2 related uses
- CORSIA related uses