



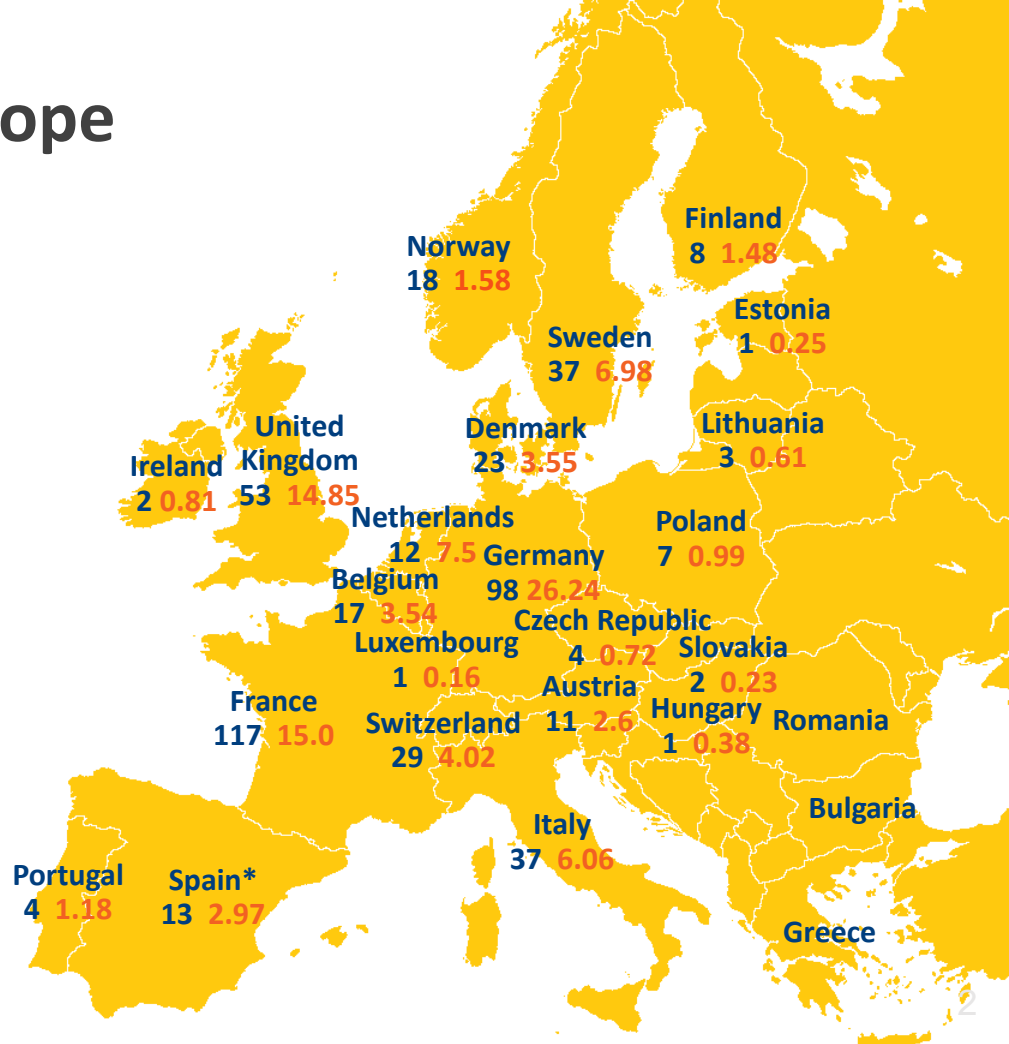
Waste-to-Energy in Europe

■ **Number of WtE Plants operating in Europe**
(not including hazardous waste incineration plants):
498

■ **Residual waste thermally treated:**
103.35 Million tonnes

Data for 2021, supplied by CEWEP members and national sources

*: Includes plant in Andorra and SAICA plant

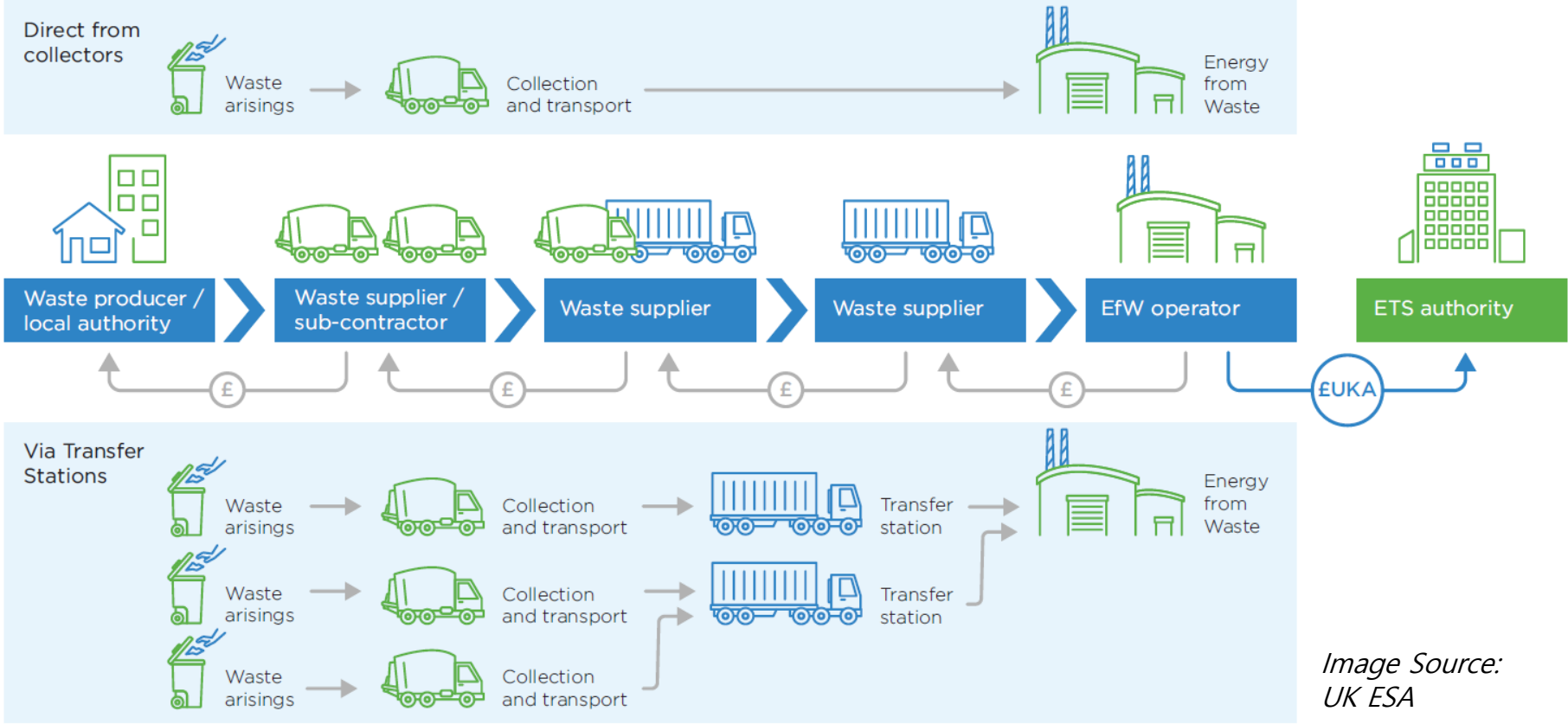


Waste-to-Energy treats residual, non-recyclable waste

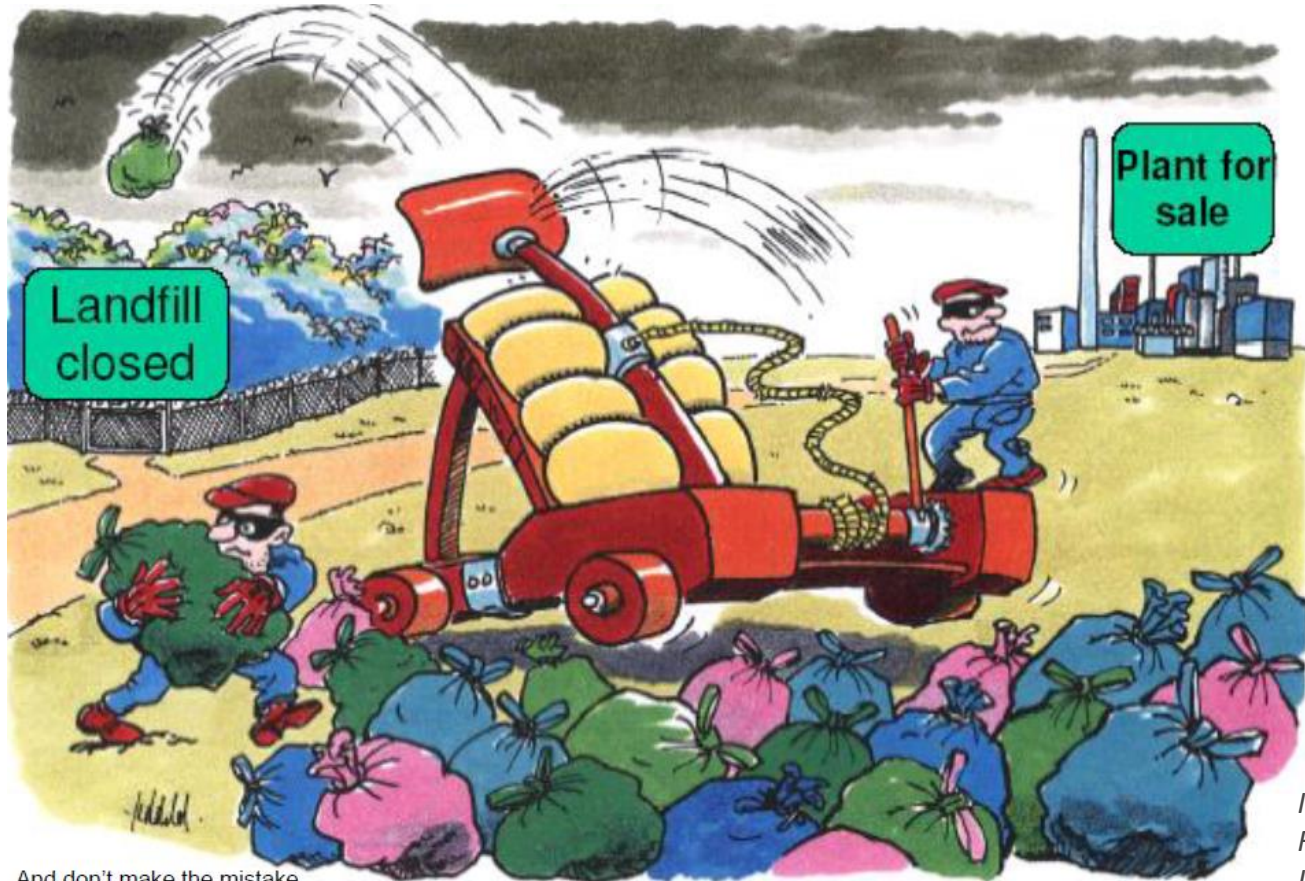


How to ensure polluter-pays-principle ?

Entire Value Chain in waste management is longer and more articulated



When proper waste management solutions become too expensive



And don't make the mistake ...
Source: Stadtreinigung Hamburg-2008

*Image courtesy of
Franz Neubacher,
UPV Austria*

Alternative to not emit CO2: Close Inlet

Has anyone ever proposed to forbid the use of restrooms as means to tackle the issue of sewage sludge ?

